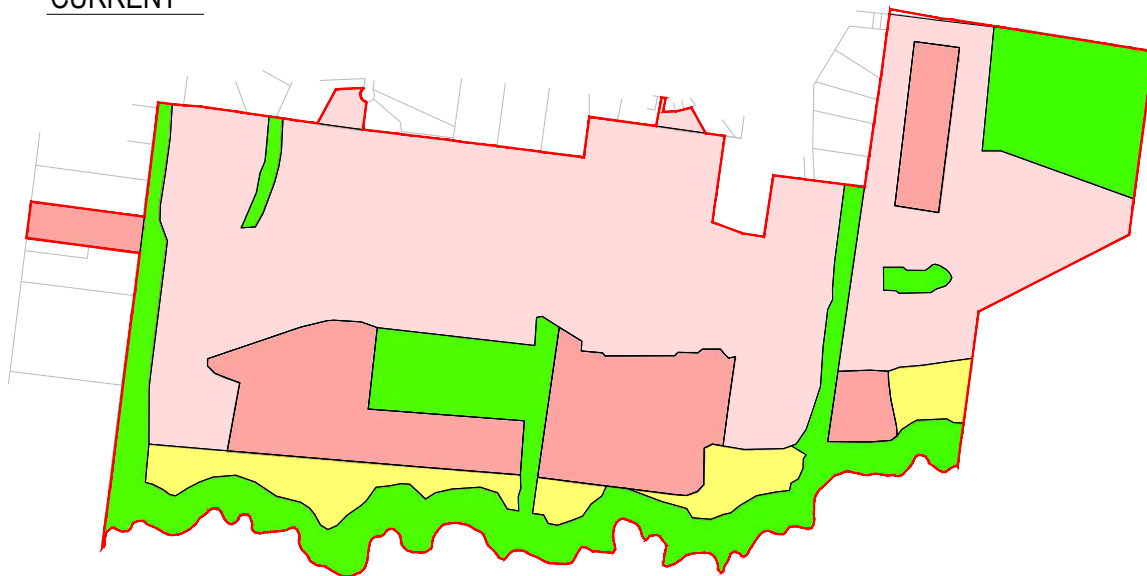




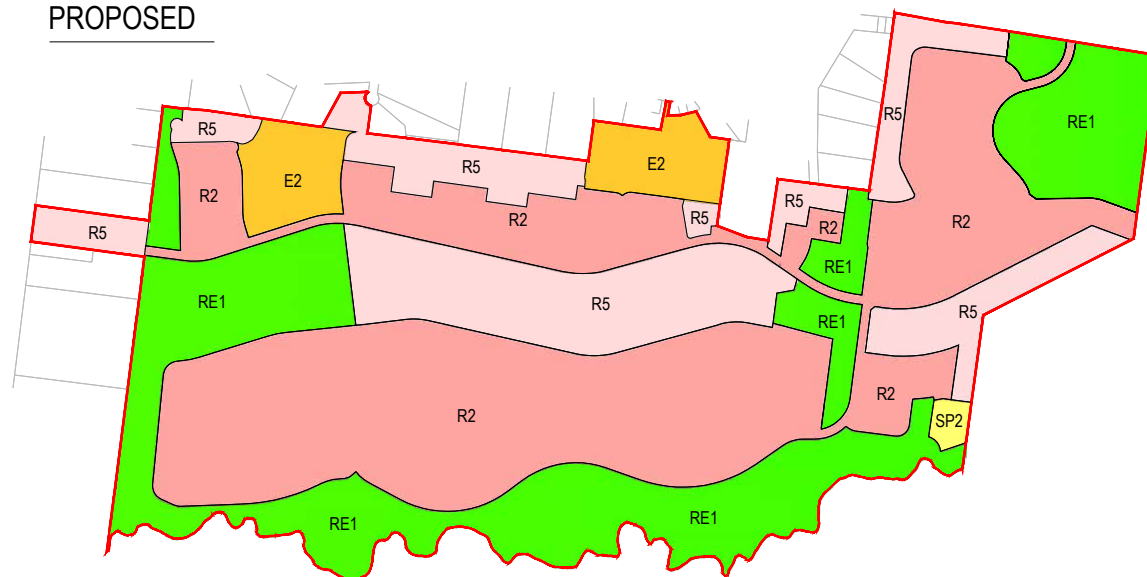


CURRENT



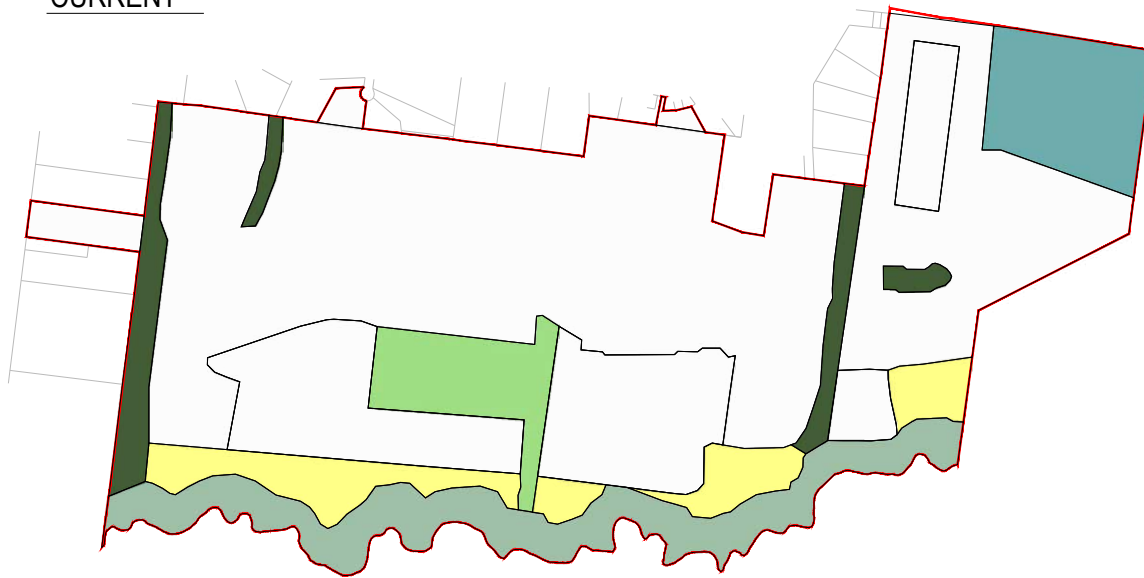
RE1	44.77ha
E2	-
SP2	12.4ha
Total	57.17ha

PROPOSED



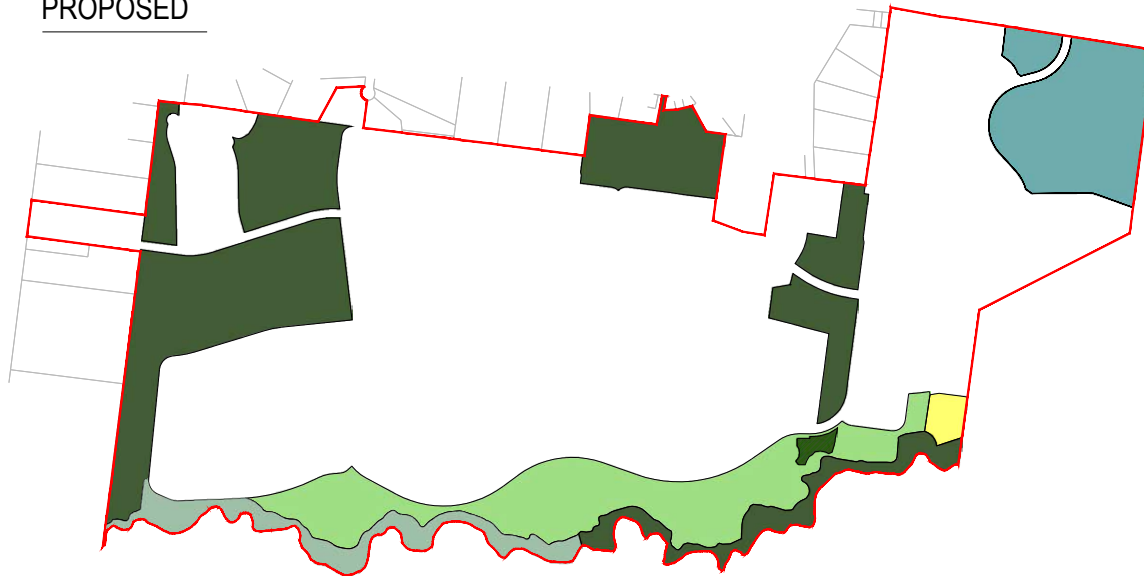
RE1	52.64ha
E2	9.59ha
SP2	0.82ha
Total	63.05ha

CURRENT

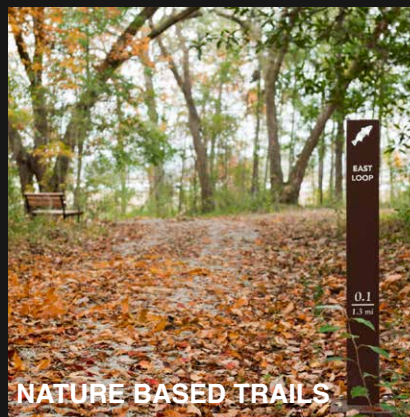
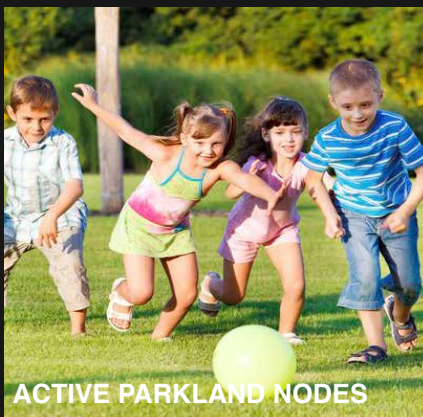


LAKE PARK	10.33ha
VILLAGE GREEN	7.89ha
CREEK PARK	17.98ha
NATURE BASED / PASSIVE RESERVES	8.57ha
SP2	12.4ha
TOTAL	57.17ha

PROPOSED



LAKE PARK	10.36ha
VILLAGE GREEN	14.51ha
CREEK PARK	4.52ha
NATURE BASED / PASSIVE RESERVES	32.84ha
SP2	0.82ha
TOTAL	63.05ha



A key principle of the Proposed Master Plan is to create a highly integrated and multi-use open space network that will deliver improved outcomes in terms of usability, amenity, access + connectivity and maintenance. By providing a variety of active and passive nodes that are linked through nature based conservation areas and parkland trails, the vision is to offer a wider range of community and recreational spaces that will become destinations for both Jacaranda Ponds and the wider Glossodia community.

- Key Pedestrian + Cyclist Linkages (Internal)
- - Possible Key Pedestrian + Cyclist Linkages (External) to Wider Glossodia Community

THE LAKE PARK - KEY DESIGN DRIVERS

- Design of entry drive to create a sense of openness and maximise views and access around the lake
- Provide a variety of active and passive nodes that help to activate the lake edge and provide a more diverse range of recreational spaces and experiences
- The character and landscape / hardscape treatment of the main entry drive to slow vehicle speeds and improve safety, accessibility and connectivity to the lake park from adjoining residential areas
- Lake Park to become a unique and high amenity recreational destination for the wider Glossodia community



Create a key community and recreational destination for the wider Glossodia community



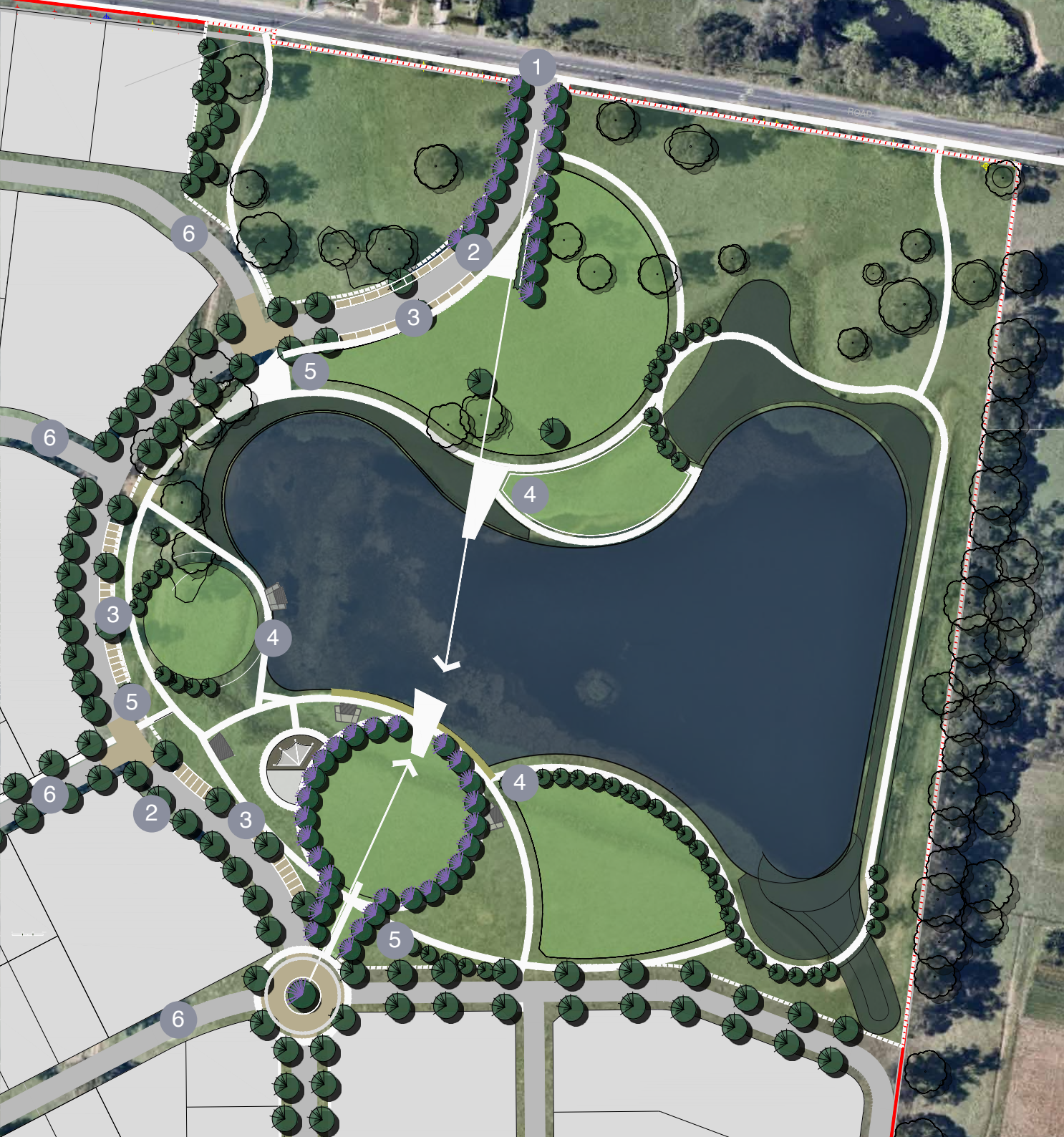
Create a unique entry to the community and lake park that maximises views and access around the lake



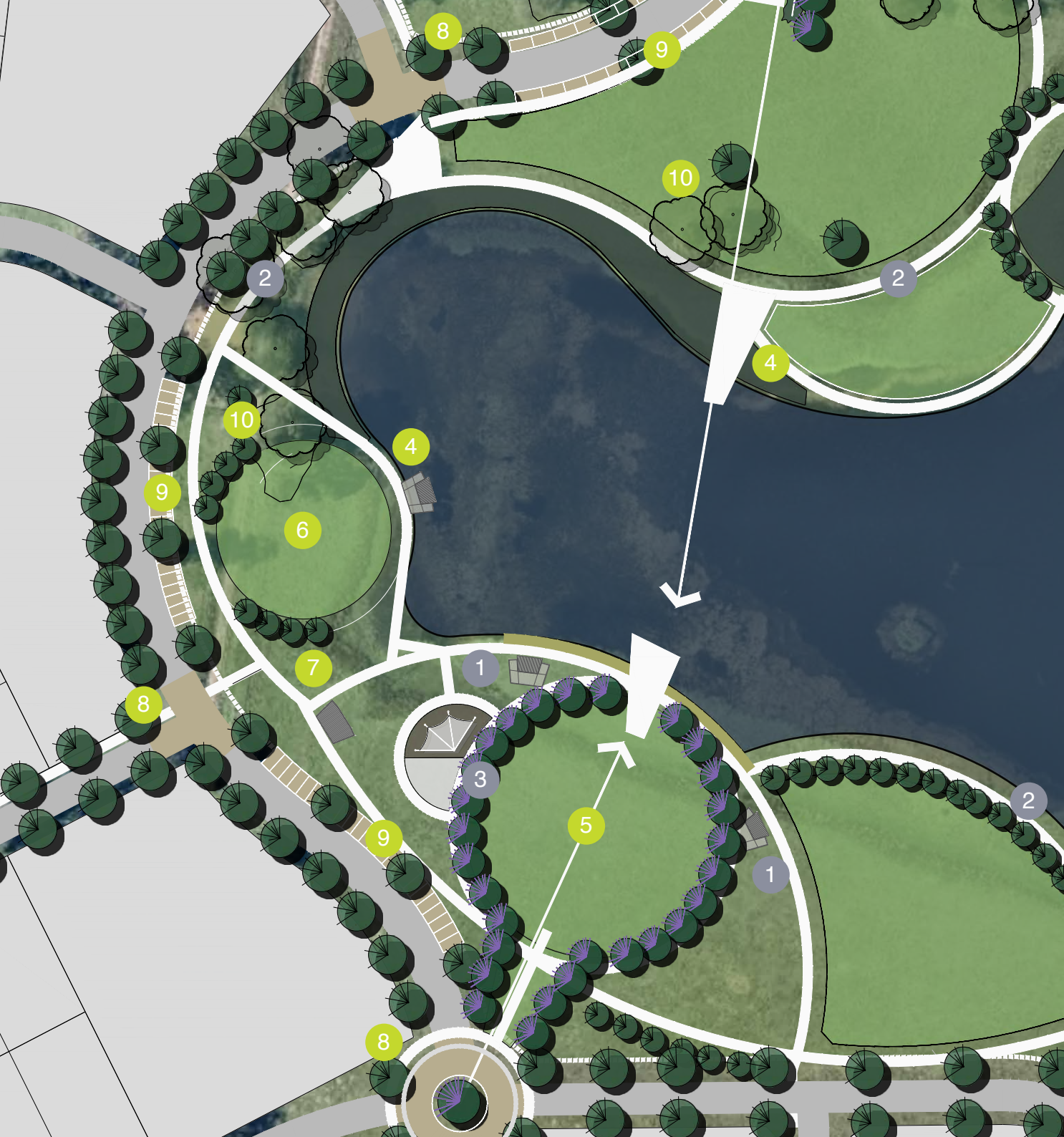
Street design and pathway network to maximise accessibility and connectivity to the park and improve safety



Curvilinear form of the entry drive to slow vehicle speeds and increase accessibility and activation of the lake edge



- 1 Main entry along Spinks Road positioned to maximise safety at the intersection whilst also creating a sense of openness and increasing views and activation of the lake
- 2 Curvilinear form of the entry drive helps to slow vehicle speeds whilst also increasing activation and accessibility to the central and eastern portions of the Lake Park
- 3 Potential to include on road parking at various locations around the lake edge
- 4 Potential to include additional passive nodes / bbq shelters / picnic areas at various locations around the lake edge to increase diversity and choice of recreation spaces
- 5 Detailed design of entry drive, intersection treatments and landscaping to slow vehicle speeds and improve accessibility and connectivity to park
- 6 All streets focus viewlines and pedestrian linkages down to lake to maximise connectivity



KEY OPEN SPACE / COMMUNITY FACILITIES REQUIRED UNDER VPA

- 1 2 x shelters inclusive of picnic facilities - located to provide lake view and integration with playground
- 2 Pathway loop around lake - continuous loop with multiple circuit / route options
- 3 Small Playground and junior skate surround to play space to connect with main pathway and other amenities - include nature based play elements

Additional / detailed items to be located as required subject to detailed design

- Bins
- Bicycle Rack
- Fringing Vegetation establishment

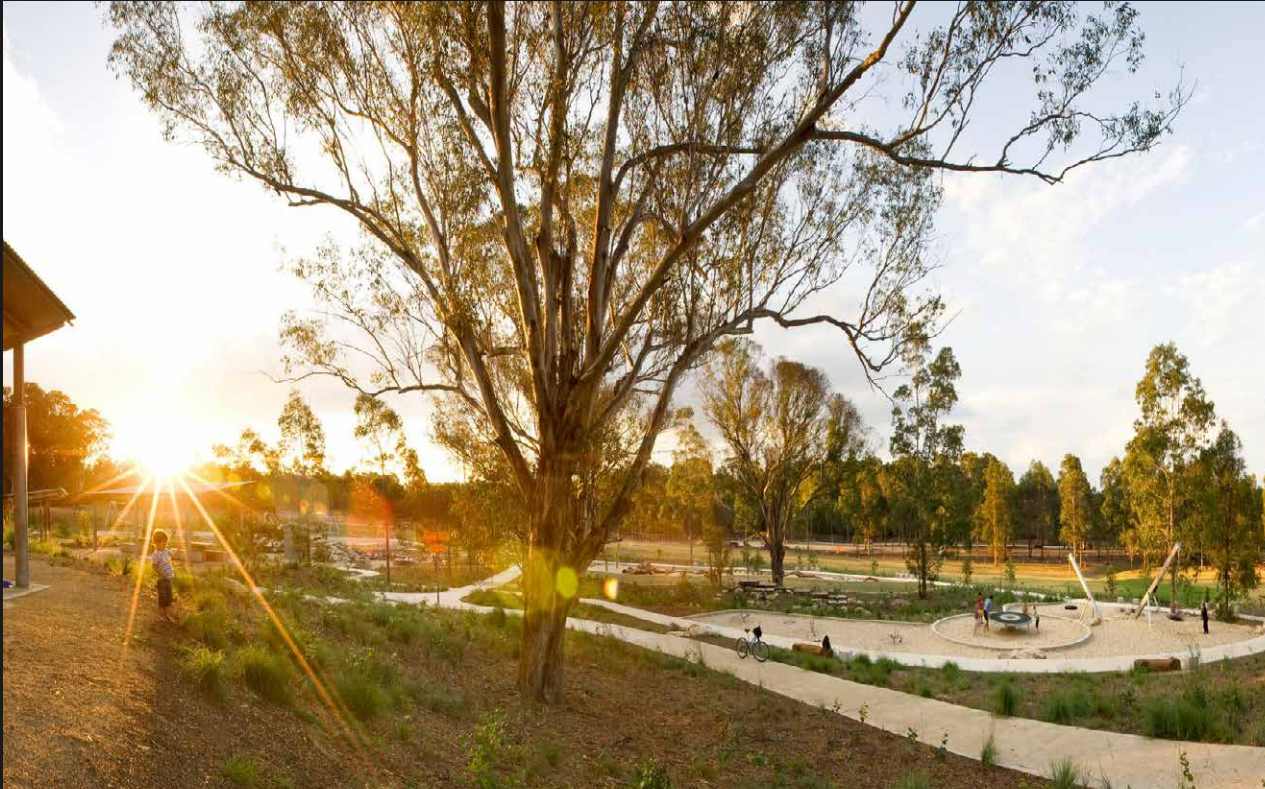
POTENTIAL ADDITIONAL FACILITIES

- not required under VPA but suggested to improve community / recreation outcomes
- subject to ongoing design and approval process

- 4 Potential additional bbq shelters / viewing platforms to improve recreation choice and activation of lake park
- 5 60m x 60m active recreation / kick + throw area
- 6 Smaller 30m x 30m active recreation space
- 7 Potential toilet block - subject to future demand
- 8 Potential intersection / landscape treatments to slow vehicle speeds and improve accessibility, connectivity and safety at key intersections / crossings - subject to engineering design
- 9 Potential on-street parking along entry drive esplanade interface to park
- 10 Potential retention of existing vegetation - subject to detailed design and qualitative assessment

THE VILLAGE GREEN - KEY DESIGN DRIVERS

- Integrate the Village Green with Currency Creek to provide a higher amenity nature based setting and improve accessibility and recreational opportunities
- Design the Village Green based upon multiple use principles that provide a greater range of recreational opportunities and improve maintenance outcomes
- Improve the integration between the Village Green, creekline and wider open space network to encourage walking, cycling and improve accessibility, connectivity and safety
- Design the Village Green as a series of connected nodes that provide a greater spread, diversity and choice of usage and help to activate the Currency Creek frontage



Integrate the Village Green with the Currency Creek environs to provide a nature based setting that improves amenity and recreational opportunities and creates a destination for the wider Glossodia community



Multiple use spaces that provide a wider range of recreational opportunities and improve maintenance outcomes



Improve integration with the wider open space network to encourage walking and cycling



Create a series of connected nodes that provide a greater spread, diversity and choice of recreational spaces



||||| **Village Green + Creekline Parklands**
- over 20ha+ of integrated multi-use parkland

1

The Main Central Green

Centrally located node accommodating the main recreational features including district playground, BBQ shelters and active recreation areas



2

Secondary Nodes

Smaller nodes linked to the main central green incorporating shelters, picnic areas and active and passive spaces - provide more recreational diversity and choice and help to activate the creekline environs



3

Creekline Setting

Providing nature based cycling and walking trails and passive recreation areas integrated with the creekline setting that increase the amenity and recreational diversity of the Village Green





1

Main Recreation Facilities

- Key recreation facilities required under VPA to be incorporated into central node including district playground, bbq shelters, toilets, multi-purpose court and skate pad and active + passive spaces

2

Main Active Recreation Space

- Large multi-purpose active recreation space of approx. 120m x 120m suited to accommodating a range of informal sporting and community activities

3

Secondary Active Recreation Spaces

- Flexible multi-purpose active recreation spaces of approx. 60m x 60m suited to accommodating a range of informal sporting and community activities

4

Creekside Trails

- Extensive creekside trails linking the Village Green nodes and residential areas and encouraging walking and cycling

5

Secondary Passive Recreation Nodes

- Potential to provide additional bbq shelters / seating areas to improve recreation choice and activation of creekline
- not required under VPA but suggested to improve community / recreation outcomes (subject to ongoing design and approval process)

6

Informal Creekside Passive Areas

- Informal areas along creekline linking the recreation nodes and providing spaces suited for picnics and nature based passive uses

7

WSUD / Bio-Basins

- Designed to minimise batters / basin walls and landscaped to become integrated feature of open space and trail network



KEY OPEN SPACE / COMMUNITY FACILITIES REQUIRED UNDER VPA

- 1 Playground (District Playground) and junior skate surround to play space to connect with main pathway and other amenities
- 2 Shelter x 4 - inclusive of picnic facilities
- 3 Multi-purpose court including the provision for skate pad facilities, agility activities and the ball court area to allow for multiple application (basketball, futsal, netball)
- 4 Passive area (fencing, bag holders, water)
- 5 Toilet block - inclusive of separate male / female and PWD

Additional / detailed items to be located as required subject to detailed design:

- BBQ x 2 (incorporated with shelters)
- Irrigation to Village Green
- Potable water refill station
- Bins x 6
- Bicycle Rack x 1
- Fringing Vegetation establishment
- General seating throughout area x 6
- Pathways
- Lighting

CONSERVATION + PASSIVE OPEN SPACE - KEY DESIGN DRIVERS

- Conserve and enhance existing vegetation and natural site features - potential to revegetate cleared spaces to strengthen the environmental qualities whilst creating a lower maintenance and more natural setting
- Creating small picnic and passive recreation spaces that are easily accessible, visible and low maintenance but allow people to sit within and connect with nature
- Provide trails that offer a strong nature based experience but link with the wider open space and pedestrian network
- Nature based focus - minimising infrastructure, creating informal / natural character and focus on passive uses only (walking, picnics, interpretive / nature based activities)



Conserving and enhancing the natural site features and integrating with trails and small, informal passive recreation spaces



Nature based trails that tie in with the wider open space network



Potential to incorporate low scale signage and interpretive elements



Small picnic and seating spaces that are low maintenance and enhance the nature based recreational experience



1

Passive Nodes

- Passive picnic / seating / viewing outlook spaces created that sit within natural setting but that are easily accessible / visible from adjoining residential areas

2

Overland Flow

- Potential to fill dams to remove ongoing maintenance requirements and risk and regrade areas to manage overland flow from main gullies whilst still protecting existing vegetation

3

Trails

- Trails focus on providing nature based experience of key site features and integrated with wider open space and pedestrian network. Fencing to be integrated with the trail design to protect conservation areas.

4

Revegetation Zones

- Opportunity to revegetate cleared / open areas to enhance the environmental qualities and natural setting whilst also helping to reduce ongoing maintenance requirements

THE OUTLOOKS - KEY DESIGN DRIVERS

- Create feature viewing areas along the central ridge that offer elevated views towards the creekline and out over the community and distant landscape
- Position the outlooks in locations that maximise views but that also provide a landscape / community / wayfinding feature at key locations along the open space and trail network
- Outlooks can be located within parkland / biobank areas or as feature streetscape widenings that create view corridors
- Outlooks could include seating areas, platforms, feature landscaping / hardscaping, artwork / sculpture / signage - subject to detailed design and council input



Potential to include feature outlooks as key nodes along the open space, street and trail network - utilising low maintenance / robust materials and finishes



Potential to add viewing areas / platforms within widenings of streets to create view corridors

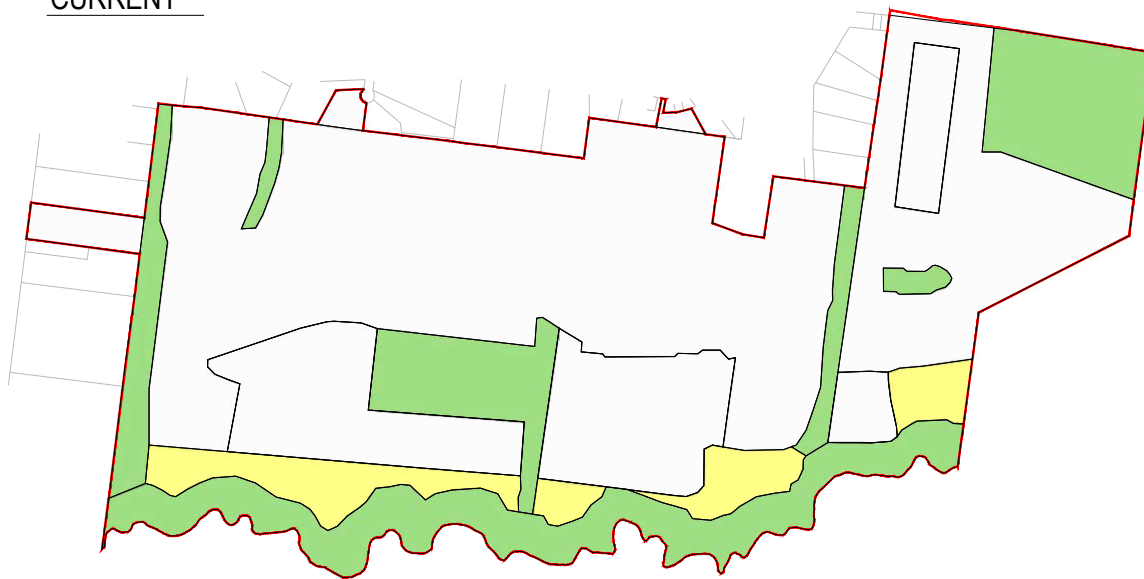





Outlooks could have simple detailing whilst still being a key feature of the open space and recreational network



Potential to create iconic viewing platforms that frame views and become a feature of the community and recreational trails




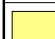
CURRENT



 TRADITIONAL COUNCIL MAINTAINED OPEN SPACE	44.77ha	78.3%
 BIO BANK FUNDED / MAINTAINED OPEN SPACE	-	0%
 SP2	12.4ha	21.7%
TOTAL	57.17ha	100%

PROPOSED



 TRADITIONAL COUNCIL MAINTAINED OPEN SPACE	33.71ha	53.47%
 BIO BANK FUNDED / MAINTAINED OPEN SPACE	19.77ha	31.35%
 BIO BANK FUNDED / MAINTAINED E2 ENVIRONMENTAL CONSERVATION WITH OPPORTUNITIES FOR CERTAIN COMPATIBLE RECREATION USES	8.75ha	13.88%
 SP2	0.82ha	1.3%
TOTAL	63.05ha	100%

**POSSIBLE PEDESTRIAN + CYCLIST
NETWORK CONNECTION POINTS**

- 1 Spinks Road East
- 2 James Street
- 3 Spinks Road Central
- 4 Derby Place
- 5 Spinks Road West

GLOSSODIA
VILLAGE
+ PUBLIC SCHOOL

WOODBURY
RESERVE

GOLDEN VALLEY DRIVE

SPINKS ROAD

MAIN PATHWAY LINKAGES (INTERNAL)

- Proposed main pedestrian and cyclist network based upon 2.5m shared multi-purpose pathway
- Integrates with all key open space and community destinations

MAIN PATHWAY LINKAGES (EXTERNAL)

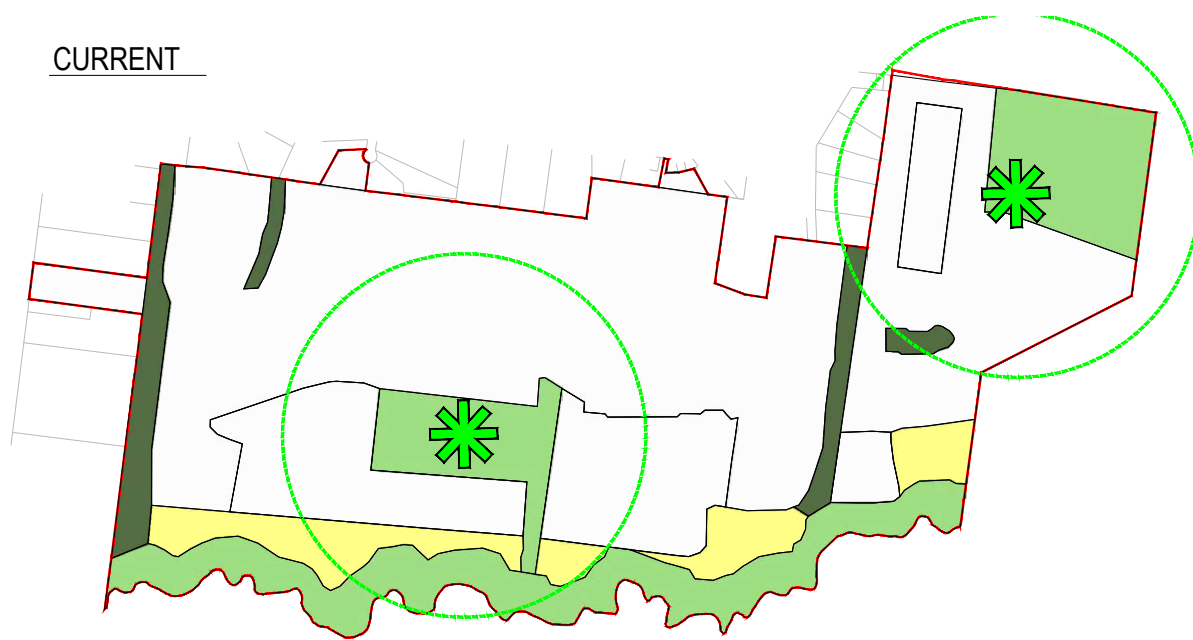
- Potential future pedestrian and cyclist network connections providing integration between Jacaranda Ponds and the existing Glossodia community



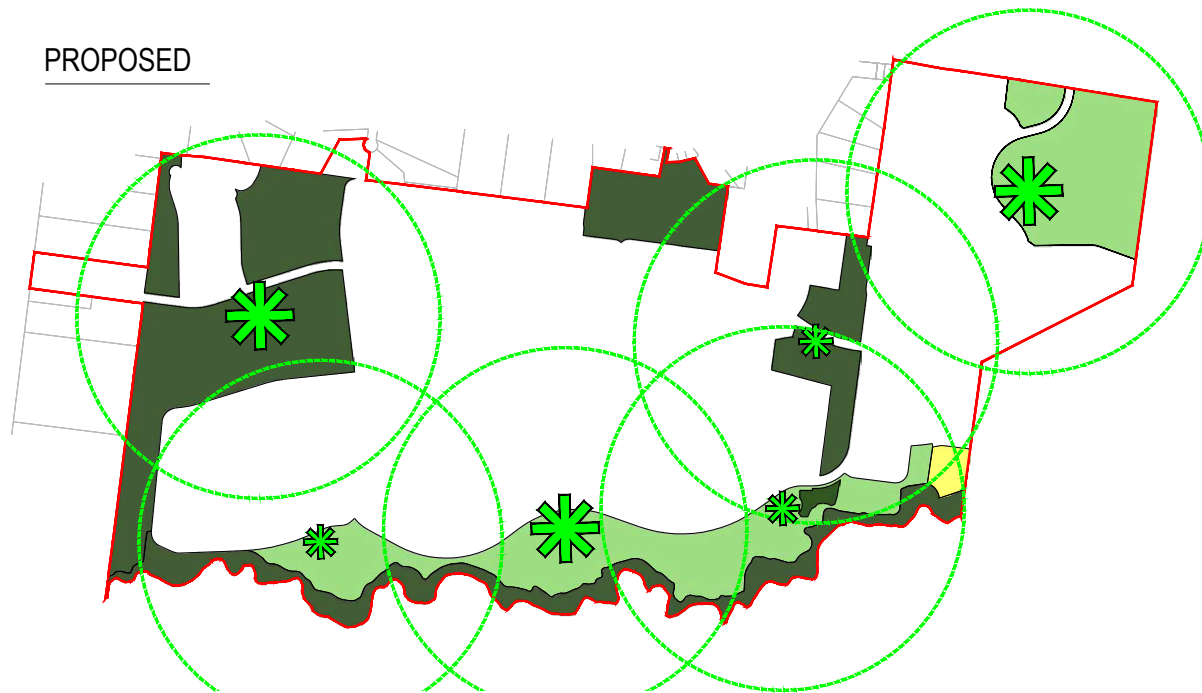
KEY OPEN SPACE AND COMMUNITY DESTINATIONS



CURRENT



PROPOSED

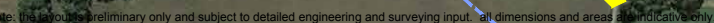


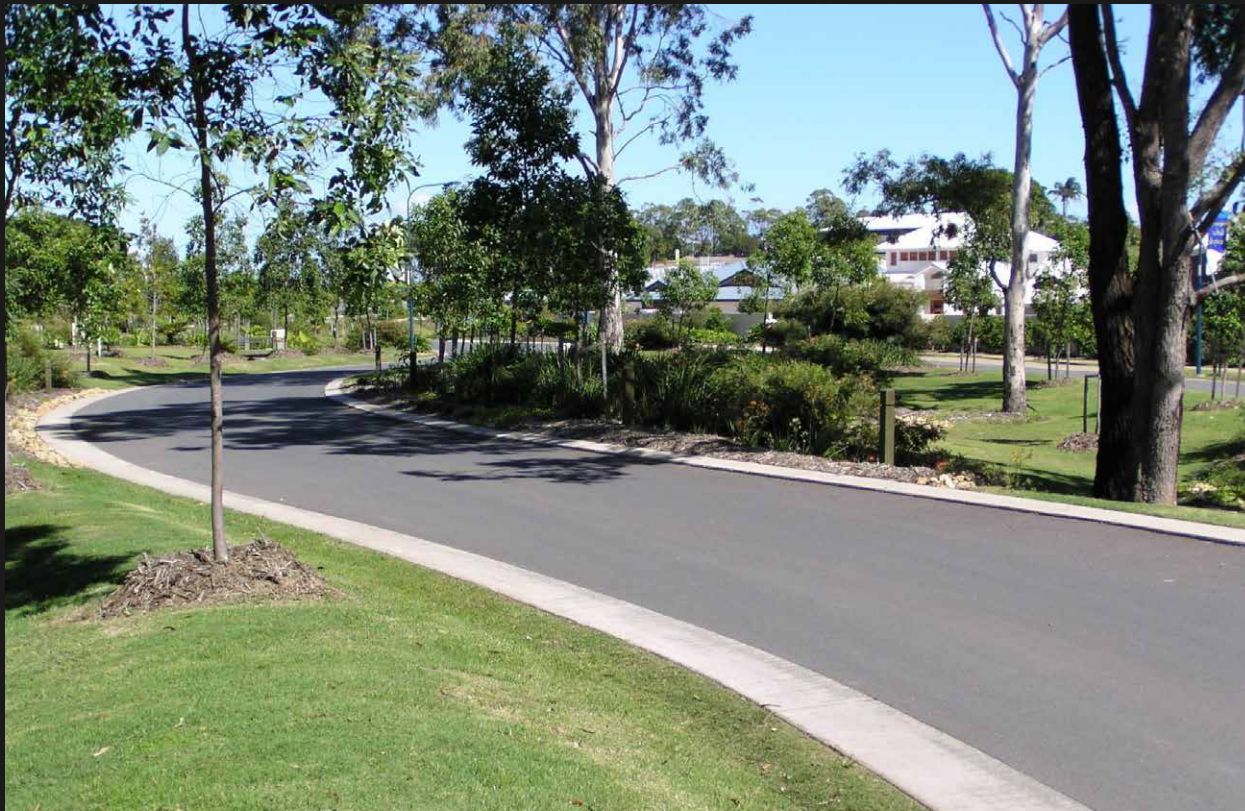
- ACTIVE OPEN SPACE
- PASSIVE OPEN SPACE
- MAJOR OPEN SPACE AND RECREATION NODES
- SECONDARY OPEN SPACE AND RECREATION NODES
- 400m / 5 MINUTES WALK
- SP2 / INFRASTRUCTURE LAND



A key feature of the Proposed Master Plan is the Key Avenues and Green Streets and Multi-purpose Pathway Network that are proposed to have special landscape treatments and incorporate 2.5m off-road pathways that will link between key open space and community destinations to improve safety and amenity and will create a highly connected and attractive pedestrian and cyclist network.

- Key Avenues + Green Streets
- Key Nature Based / Parkland Trails
- Links to Wider Glossodia Community





Streetscapes that provide a green setting and sense of space



Details and landscaping that help reflect the rural style character



Lot sizes that provide space and opportunities for green, leafy character to be established over time



Landscaping and open spaces that are low maintenance and reflect the informal rural character



Guidelines that encourage homes that are well designed for solar access and private spaces





POTENTIAL CONVENIENCE SHOPPING / COMMUNITY FACILITIES (ALTERNATIVE SITES / OPTIONS)

- Potential future convenience shopping and community facility site options under investigation
- Subject to future economic feasibility studies and consultation with local community
- Each site option integrated with potential bus routes and main pedestrian / cyclist network

— MAIN PEDESTRIAN AND CYCLIST NETWORK

— POTENTIAL MAIN BUS NETWORK